



ECO-LINE

Standardised energy sources with full range of functions and extensive I4.0 connectivity thanks to SIEMENS PLC. As easy to operate as a smartphone with EEI² interface.



ECO-LINE EEI² XS 15 MF



ECO-LINE EEI² 75 MF



ECO-LINE EEI² L 75 MF 2A

The basic physical principle of induction heating enables maximum energy efficiency and, in conjunction with a high-quality and therefore durable product, the greatest possible sustainability.

Heating takes place exactly where it is technically necessary, without heating the surroundings or heating workpiece areas that can remain cold.

An induction heating process is powered by electricity and is therefore CO₂-free if powered by renewable energy. Without gas or flame, precise and exactly reproducible.

State-of-the-art power electronics and control technology, Industry 4.0 connectivity, eQC modules for quality assurance and the stringent testing of all components make these generators top-class induction energy sources with maximum availability. With the eldec easy intuitive interface - EEI² for short - they are as easy to operate as a smartphone. They have a continuous output of 5 to 150 kW (MF) or 5 to 75 kW (HF), optionally time- and frequency-dependent power increase up to 50% (MF). ECO-LINE EEI² energy sources are available in a frequency range from 8 kHz to 400 kHz.

ECO-LINE EEI² generators are available with single or multiple outputs. Multiple outputs can be supplied as „2A“ (two outputs, heating sequentially), as „x 2“ (two outputs, heating simultaneously, independently of each other) or as „: 2“ (two outputs, heating simultaneously, symmetrically).

The advantages of these powerful and robust energy sources are found in many details - from the high level of device protection through electrical isolation, and short-circuit-proof transistor technology to the precise energy metering and high efficiency.

Technical Data ECO-LINE EEI² High Frequency

	Output power (100%ED)	Mains connection at 400V, 50Hz	Cooling water consumption without inductor	Dimensions H x W x D	Weight
ECO-LINE EEI ² XS HF 5	5 kW (HF)	10 A	6 l/min	340 x 560 x 800 mm	50 kg
ECO-LINE EEI ² XS HF 10	5 kW (HF)	20 A	10 l/min	340 x 560 x 800 mm	50 kg
ECO-LINE EEI ² XS HF 15	5 kW (HF)	32 A	12 l/min	340 x 560 x 800 mm	50 kg
ECO-LINE EEI ² S HF 5	5 kW (HF)	10 A	6 l/min	590 x 560 x 800 mm	80 kg
ECO-LINE EEI ² S HF 10	10 kW (HF)	20 A	10 l/min	590 x 560 x 800 mm	80 kg
ECO-LINE EEI ² S HF 15	15 kW (HF)	32 A	12 l/min	590 x 560 x 800 mm	80 kg
ECO-LINE EEI ² S HF 20	20kW (HF)	50 A	13 l/min	590 x 560 x 800 mm	80 kg
ECO-LINE EEI ² S HF 30	30 kW (HF)	63 A	14 l/min	590 x 560 x 800 mm	80 kg
ECO-LINE EEI ² XL HF 50	50 kW (HF)	125 A	21 l/min	1170 x 560 x 800 mm	120 kg
ECO-LINE EEI ² XL HF 70	75 kW (HF)	160 A	29 l/min	1170 x 560 x 800 mm	120 kg
ECO-LINE EEI ² XL HF 90	90 kW (HF)	200 A	34 l/min	1170 x 560 x 800 mm	120 kg

„-2A“ – two outputs, heating one after the other

ECO-LINE EEI ² S HF 5 -2A	5 kW (HF)	10 A	6 l/min	590 x 560 x 800 mm	60 kg
ECO-LINE EEI ² S HF 10 -2A	10 kW (HF)	20 A	10 l/min	590 x 560 x 800 mm	60 kg
ECO-LINE EEI ² S HF 15 -2A	15 kW (HF)	32 A	12 l/min	590 x 560 x 800 mm	60 kg

„x2“ – two outputs, heating simultaneously and independently of each other

ECO-LINE EEI ² M HF 1,5 x2	2 x 1,5 kW (HF)	10 A	6 l/min	770 x 560 x 800 mm	130 kg
ECO-LINE EEI ² M HF 5 x2	2 x 5 kW (HF)	20 A	12 l/min	770 x 560 x 800 mm	130 kg
ECO-LINE EEI ² M HF 10 x2	2 x 10 kW (HF)	50 A	20 l/min	770 x 560 x 800 mm	130 kg
ECO-LINE EEI ² M HF 15 x2	2 x 15 kW (HF)	63 A	24 l/min	770 x 560 x 800 mm	130 kg

„:2“ – two outputs, simultaneous symmetrical heating

ECO-LINE EEI ² S HF 5 :2	5 kW HF (2,5 kW per coaxial transformer)	10 A	10 l/min	590 x 560 x 800 mm	60 kg
ECO-LINE EEI ² S HF 10 :2	10 kW HF (5 kW per coaxial transformer)	20 A	15 l/min	590 x 560 x 800 mm	60 kg
ECO-LINE EEI ² S HF 15 :2	15 kW HF (7,5 kW per coaxial transformer)	32 A	18 l/min	590 x 560 x 800 mm	60 kg

Technical Data ECO-LINE EEI² Middle Frequency

	Output power (100%ED)	Mains connection at 400V, 50Hz	Cooling water consumption without inductor	Dimensions H x W x D	Weight
ECO-LINE EEI ² XS MF 5	5 kW (MF)	10 A	6 l/min	340 x 560 x 800 mm	42 kg
ECO-LINE EEI ² XS MF 10	10 kW (MF)	20 A	10 l/min	340 x 560 x 800 mm	42 kg
ECO-LINE EEI ² XS MF 15	15 kW (MF)	32 A	12 l/min	340 x 560 x 800 mm	42 kg
ECO-LINE EEI ² XS MF 20	20 kW (MF)	40 A	13 l/min	340 x 560 x 800 mm	42 kg
ECO-LINE EEI ² XS MF 20(30)	30 kW (MF)	40/63 A	14 l/min	340 x 560 x 800 mm	42 kg
ECO-LINE EEI ² XS MF 30	30 kW (MF)	63 A	14 l/min	340 x 560 x 800 mm	42 kg
ECO-LINE EEI ² S MF 5	5 kW (MF)	10 A	6 l/min	590 x 560 x 800 mm	50 kg
ECO-LINE EEI ² S MF 10	10 kW (MF)	20 A	10 l/min	590 x 560 x 800 mm	50 kg
ECO-LINE EEI ² S MF 15	15 kW (MF)	32 A	12 l/min	590 x 560 x 800 mm	50 kg
ECO-LINE EEI ² S MF 20	20 kW (MF)	40 A	13 l/min	590 x 560 x 800 mm	50 kg
ECO-LINE EEI ² S MF 20(30)	30 kW (MF)	40/63 A	14 l/min	590 x 560 x 800 mm	50 kg
ECO-LINE EEI ² S MF 30	30 kW (MF)	63 A	14 l/min	590 x 560 x 800 mm	50 kg
ECO-LINE EEI ² M MF 40	40 kW (MF)	80 A	18 l/min	770 x 560 x 800 mm	120 kg
ECO-LINE EEI ² M MF 50	50 kW (MF)	100 A	21 l/min	770 x 560 x 800 mm	120 kg
ECO-LINE EEI ² M MF 50(80)	80 kW (MF)	100/160 A	30 l/min	770 x 560 x 800 mm	120 kg
ECO-LINE EEI ² M MF 75	75 kW (MF)	160 A	29 l/min	770 x 560 x 800 mm	120 kg
ECO-LINE EEI ² XL MF 100	100 kW (MF)	200 A	37 l/min	1170 x 560 x 800 mm	200 kg
ECO-LINE EEI ² XL MF 150	150 kW (MF)	300 A	49 l/min	1170 x 560 x 800 mm	200 kg

„-2A“ – two outputs, heating one after the other

ECO-LINE EEI ² S MF 5 -2A	5 kW (MF)	10 A	10 l/min	590 x 560 x 800 mm	60 kg
ECO-LINE EEI ² S MF 10 -2A	10 kW (MF)	20 A	15 l/min	590 x 560 x 800 mm	60 kg
ECO-LINE EEI ² S MF 15 -2A	15 kW (MF)	32 A	18 l/min	590 x 560 x 800 mm	60 kg
ECO-LINE EEI ² S MF 20 -2A	20 kW (MF)	40 A	20 l/min	590 x 560 x 800 mm	60 kg
ECO-LINE EEI ² S MF 20(30) -2A	30 kW (MF)	40/63 A	22 l/min	590 x 560 x 800 mm	100 kg
ECO-LINE EEI ² S MF 30 -2A	30 kW (MF)	63 A	22 l/min	590 x 560 x 800 mm	100 kg
ECO-LINE EEI ² M MF 40 -2A	40 kW (MF)	80 A	27 l/min	770 x 560 x 800 mm	130 kg
ECO-LINE EEI ² M MF 50 -2A	50 kW (MF)	100 A	30 l/min	770 x 560 x 800 mm	130 kg
ECO-LINE EEI ² M MF 50(80) -2A	80 kW (MF)	100/160 A	40 l/min	770 x 560 x 800 mm	130 kg
ECO-LINE EEI ² M MF 75 -2A	75 kW (MF)	160 A	39 l/min	770 x 560 x 800 mm	130 kg
ECO-LINE EEI ² XL MF 100 -2A	100 kW (MF)	200 A	56 l/min	1170 x 560 x 800 mm	200 kg
ECO-LINE EEI ² XL MF 150 -2A	150 kW (MF)	300 A	76 l/min	1170 x 560 x 800 mm	200 kg

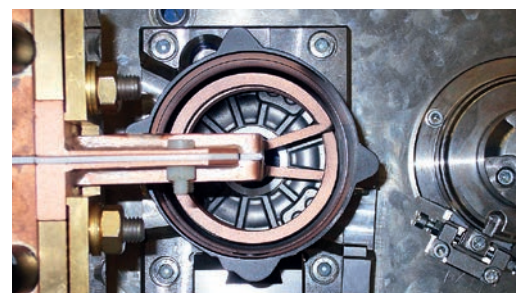
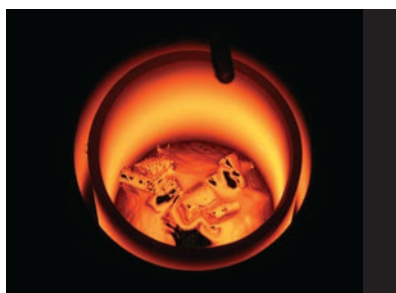
	Output power (100%ED)	Mains connection at 400V, 50Hz	Cooling water consumption without inductor	Dimensions H x W x D	Weight
--	--------------------------	--------------------------------------	--	-------------------------	--------

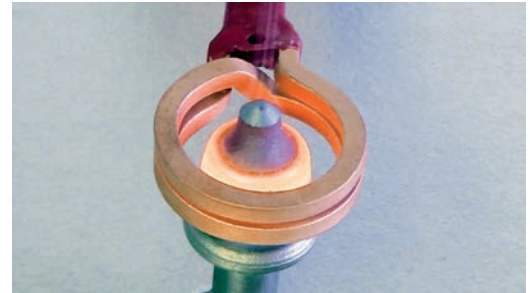
„x2“ – two outputs, heating simultaneously and independently of each other

ECO-LINE EEI ² M MF 5 x2	2 x 5 kW (MF)	20 A	12 l/min	770 x 560 x 800 mm	130 kg
ECO-LINE EEI ² M MF 10 x2	2 x 10 kW (MF)	40 A	20 l/min	770 x 560 x 800 mm	130 kg
ECO-LINE EEI ² M MF 15 x2	2 x 15 kW (MF)	63 A	24 l/min	770 x 560 x 800 mm	130 kg
ECO-LINE EEI ² M MF 20 x2	2 x 20 kW (MF)	80 A	26 l/min	770 x 560 x 800 mm	130 kg
ECO-LINE EEI ² M MF 20(30) x2	2 x 30kW (MF)	80/125 A	28 l/min	770 x 560 x 800 mm	150 kg
ECO-LINE EEI ² M MF 30 x2	2 x 30 kW (MF)	125 A	28 l/min	770 x 560 x 800 mm	150 kg
ECO-LINE EEI ² XL MF 40 x2	2 x 40 kW (MF)	160 A	36 l/min	1170 x 560 x 800 mm	150 kg
ECO-LINE EEI ² XL MF 50 x2	2 x 50 kW (MF)	200 A	42 l/min	1170 x 560 x 800 mm	150 kg
ECO-LINE EEI ² XL MF 50(80) x2	2 x 50(80) kW (MF)	200/355 A	60 l/min	1170 x 560 x 800 mm	250 kg
ECO-LINE EEI ² XL MF 75 x2	2 x 75 kW (MF)	300 A	58 l/min	1170 x 560 x 800 mm	250 kg

„:2“ – two outputs, simultaneous symmetrical heating

ECO-LINE EEI ² S MF 5 :2	5 kW MF (2,5 kW per coaxial transformer)	10 A	10 l/min	590 x 560 x 800 mm	60 kg
ECO-LINE EEI ² S MF 10 :2	10 kW MF (5 kW per coaxial transformer)	20 A	15 l/min	590 x 560 x 800 mm	60 kg
ECO-LINE EEI ² S MF 15 :2	15 kW MF (7,5 kW per coaxial transformer)	32 A	18 l/min	590 x 560 x 800 mm	60 kg
ECO-LINE EEI ² S MF 20 :2	20 kW MF (10 kW per coaxial transformer)	35 A	20 l/min	590 x 560 x 800 mm	60 kg
ECO-LINE EEI ² S MF 20(30) :2	30 kW MF (15 kW per coaxial transformer)	40/63 A	22 l/min	590 x 560 x 800 mm	60 kg
ECO-LINE EEI ² S MF 30 :2	30 kW MF (15 kW per coaxial transformer)	63 A	22 l/min	590 x 560 x 800 mm	60 kg
ECO-LINE EEI ² M MF 40 :2	40 kW MF (20 kW per coaxial transformer)	80 A	27 l/min	770 x 560 x 800 mm	130 kg
ECO-LINE EEI ² M MF 50 :2	50 kW MF (25 kW per coaxial transformer)	100 A	30 l/min	770 x 560 x 800 mm	130 kg
ECO-LINE EEI ² M MF 50(80) :2	80 kW MF (40 kW per coaxial transformer)	100/160 A	40 l/min	770 x 560 x 800 mm	130 kg
ECO-LINE EEI ² M MF 75 :2	75 kW MF (37,5 kW per coaxial transformer)	160A	40 l/min	770 x 560 x 800 mm	130 kg





ECO-LINE EEI² Specifications



Intuitive handling with EEI² touch-screen

Power, frequency, current and voltage display

Control modes: power, temperature (PID)

Operation modes: Continuous, Tap, Timer

SIEMENS PLC

8 different timers, each min. 0.1 sec. to max. 999 sec. running time

Recipe management memory: up to 500 recipes

Housing in protection class IP20

Sensor signals for temperature detection 4-20 mA

External control and data exchange via Profinet interface

Flow and temperature monitoring of various water circuits

Short-circuit and open-circuit proof IGBT transistor technology

Automatic adaptation to resonance frequency

Circuit topology with electrical isolation

Precise energy output due to power setting in 1% steps

Energy transmission via flexible hose package 5 m (MF) and 3 m (HF)

Temperature and volume flow monitored fluid circuits with alarm function

Automatic adaptation and power regulation by pulse width modulation (MF) and pulse packet control (HF), even when exceeding the Curie temperature

Interfaces & connections: Pyrometer, foot switch, foot pedal, re-cooling system, 24V, signal lamp 4 coloured.

Inverter efficiencies > 95% (depending on operating condition)



Cable box with glow cable
for heat shrink applications



Heat Controller can be used

ECO-LINE Options

Control type: Current

Heat controller usable

Special coating possible

Foot pedal and/or foot switch

Pyrometer (single and multiple)

Mains voltage 200 V, 480 V. Others on request

Annealing cable (connection via cable box or directly)

Energy transmission via flexible hose package up to 15 m (MF) and 5 m (HF)

Adjustment range extension through serial / parallel switching (manual or automatic)

Profibus, EtherCat, other fieldbuses on request

Emergency stop 2-channel to external

Quick-change device coax / cable box

Adjustment range extension through switchable second frequency band

UL standard optionally available

eQC Moduls: eSM earth fault, ePM flux, ePM energy & eSM RFID

Remote maintenance

Temperature curves (100 pcs.)

Separate inductor cooling water supply

Quick coupling for cooling water connections

Housing in protection class IP54

graphical display of temperature curves, storage of up to 100 units

Protection option for your generator: the Heavy Duty Field Case (HDFC):





eldec

EUROPE & ROW:
eldec Induction GmbH

Otto-Hahn-Str. 14
72280 Dornstetten
Germany
Tel: +49 7443 9649-0
Mail: info@eldec.de

NORTH AMERICA:
LINK Induction LLC

2025 Franklin Road
Bloomfield Hills, MI 48302
USA
Tel: +1 248 786 7539
Mail: sebastian.liebler@eldec.de

CHINA:
eldec Suzhou Induction Ltd.

Building 6, 188 Guangzhou Road(E),
215400 Taicang, Jiangsu Province
China
Tel: +86 512-53436787
Mail: info@eldec-induction.cn

FINLAND:
EW Tech Oy

Koivulantie 135
FIN-12600 Läyliäinen
Finland
Tel: +35 850 4339 313
Mail: kimmo.korhonen@ew-tech.fi

BRAZIL:
Brasil Inducao

Rua Fortunato José Deltreggia, 816
CEP 13.347-441 Indaiatuba/SP
Brazil
Tel: +55 19 3936 4200
Mail: vendas@brasilinducacao.com

INDIA:
Unique Engineers

Gat No. 1638, Patil Nagar,
Chikhali, Pune-411062.
India
Tel: +91 9975517452
Mail: manoharsalunke@unique-engineers.in

AR-based Service

With our AR glasses, you are directly in contact with our service specialists at the machine. Quick fault diagnosis and repair saves time, costs, and gets your machine up and running again as quickly as possible.



For more information, please contact our service colleagues in Dornstetten, see contacts above.